

AUXILIARY POWDER PRODUCT SYSTEM

(A.P.P. / CAFÉ SIDECAR)

INSTALLATION INSTRUCTIONS

**PLEASE READ THIS MANUAL BEFORE PROCEEDING WITH THE
INSTALLATION, AS IT CONTAINS IMPORTANT INFORMATION ABOUT
SETTING UP THE EQUIPMENT.**



INSTALLATION INSTRUCTIONS FOR THE AUXILIARY POWDER PRODUCT (A.P.P. / CAFÉ SIDECAR)

NOTE: The Auxiliary Powder Product (A.P.P.) system **can only be used on Vista 2 and Vista 3 coffee makers equipped with NT2 rear boards.** It is **not** compatible with any other type of equipment.

SECTION I - DRILL ALL THE REQUIRED HOLES ON AN OLDER MACHINE (prior to serial number 9811V022)

1. Using the large paper template provided, mark the holes that need to be drilled on the right, outside wall of the machine (*figure 1*). A metal template is also available and can be purchased from VKI using part number K041044.
2. Drill a 1/4" hole at each of the markings. Note that a hole will also be necessary on the water tank wrap if this is an older unit. Newer units (from serial number 9611-257 onwards) will be equipped with the new tank wrap, and no drilling will be necessary.
 - a) For equipment with older water tank wraps, it is necessary to first remove the water tank assembly. Using a hole saw attachment on a power drill, make two 1 1/8" diameter holes on the side of the machine, using the smaller holes made above as guides. Use figure 1 as a reference for the location of these two larger holes. Note that the two lower holes will be the smaller ones.
 - b) Put the water tank back in place and install the valve cover onto it. This will add support to the metal while drilling.
 - c) Using the upper large hole made on the side of the machine as a guide, make a similar hole in the water tank wrap. Once the hole is made, remove the valve cover.
3. Using the smaller paper template provided, fold at the indicated line, align it against the top left edge of the fuse box and mark the hole that needs to be drilled at the rear of the machine (*figure 2*).
4. Drill a 1/4" hole at the marking.
 - a) Using a hole saw attachment on a power drill, make a 7/8" diameter hole using the hole made above as a guide.

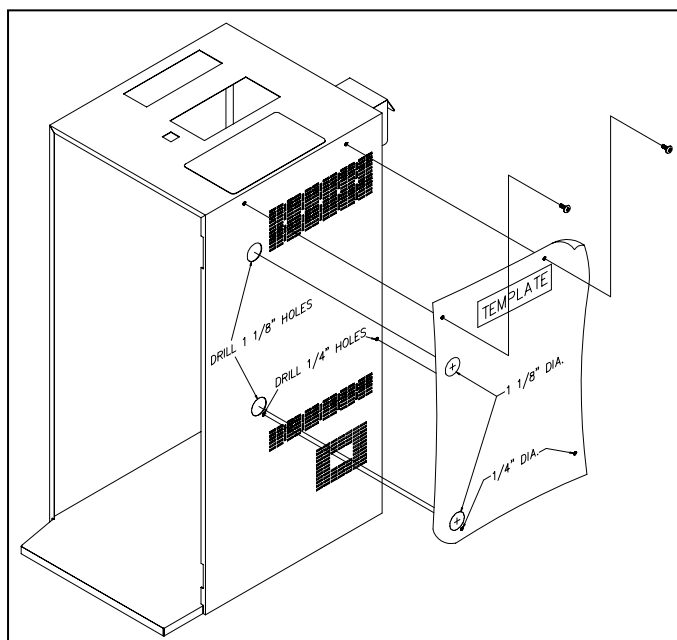


Figure 1 - Using the larger paper template, mark the location of the holes to be drilled on the side of the machine.

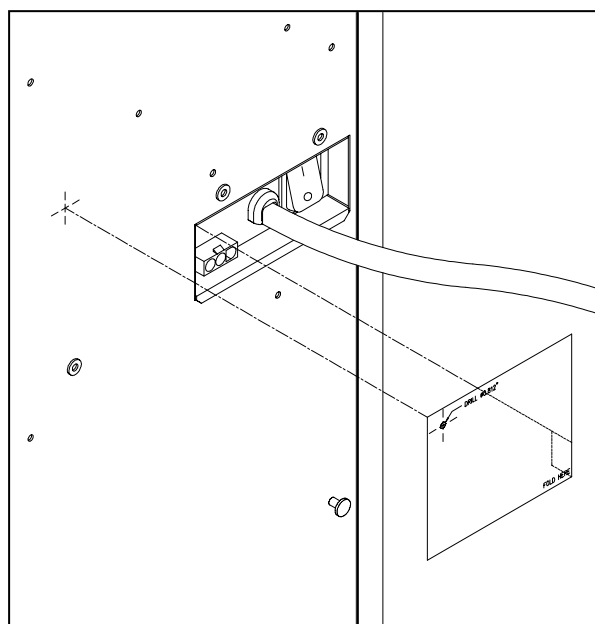


Figure 2 - Fold the bottom right corner of the smaller template, line it up against the top left corner of the fuse box and mark the hole to be drilled at the rear of the machine.

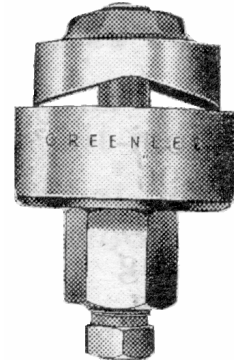
INSTALLATION INSTRUCTIONS FOR THE AUXILIARY POWDER PRODUCT (A.P.P. / CAFÉ SIDECAR)

SECTION I(a) - CUT ALL THE REQUIRED HOLES USING A GREENLEE PUNCH ON AN OLDER MACHINE (prior to serial number 9811V022)

To make the appropriate holes on the side and rear of the Vista 2/Vista 3 cabinets for installing the A.P.P. system, another tool is available (called a *Greenlee Punch* - illustrated below) that can do this job just as well.

To use a *Greenlee punch*:

1. Using the template provided as a guide, drill a small hole in the center of the larger hole that needs to be punched.
2. Pass the cutting side (top part of illustration) from the inside of the cabinet to the outside.
3. Screw the bottom end into the cutter and hand-tighten.
4. Using a wrench, continue to tighten the two pieces together until the blade cuts completely through the sheetmetal.
5. You are now done and can repeat the procedure for the other holes.



Greenlee punches come in a variety of sizes - **1 1/8" and 7/8"** punches are required for installing the A.P.P. system to the machine. They are available at most major hardware stores, but if you are having difficulty finding them, all **Grainger** stores in the U.S. and **Acklands-Grainger** stores in Canada carry the full line of *Greenlee punches*.

SECTION I(b) - REMOVE THE PERFORATED METAL KNOCK-OUTS ON THE MACHINE (serial number 9811V022 and higher)

On most Vista 2/3 machines manufactured after November 1998, the holes required for mounting the A.P.P. unit to the side of the machine are pre-punched (sheet metal is perforated). The metal centers of these holes are referred to as knock-outs.

To remove the knock-outs from the machine cabinet:

1. Place the tip of a screwdriver on the edge of the knock-out.
2. With a hammer, strike the screwdriver to loosen the knock-out from the sheetmetal.
3. Using pliers, grasp the knock-out and remove it.
4. File or sand the inside of the hole to remove any sharp edges in the metal.

INSTALLATION INSTRUCTIONS FOR THE AUXILIARY POWDER PRODUCT (A.P.P. / CAFÉ SIDECAR)

SECTION II - SECURE THE A.P.P. UNIT ONTO THE RIGHT SIDE OF THE MACHINE

1. Insert two 8-32 screws (provided) into the clinch nuts on the right side of the machine. Do not tighten these screws yet.
2. Mount the A.P.P. unit onto these screws the same way you would mount a condiment bin or cup holder to the machine (*figure 3*).
3. From the inside of the machine, pass two 8-32 screws (provided) through the side wall (where the two smaller holes were previously drilled), and into the clinch nuts on the A.P.P. This will help secure the assembly in place (*figure 3*).
4. Tighten the first two screws installed in step #1 above using a short Phillips screwdriver.

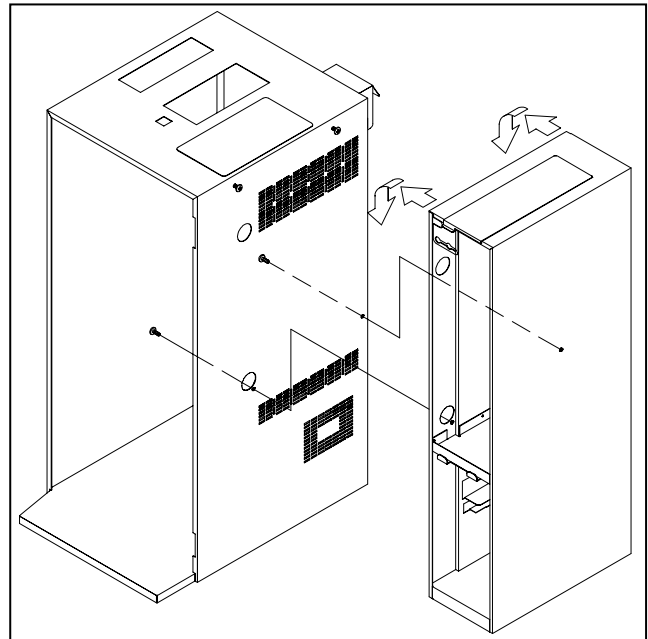


Figure 3 - Mount the unit to the side of machine

SECTION III - INSTALL THE VALVES AND HOSES

1. Drain the water tank until the water level is below the valves.
2. Remove the chocolate valve, but not the silicone valve seal support.
3. Insert the "T" shaped outlet tube into the seal support that the chocolate valve was installed.
4. Inside the machine, install the chocolate valve onto the new "T" (*figure 4*).
5. Inside the A.P.P., install the new valve onto the "T" (*figure 5*).

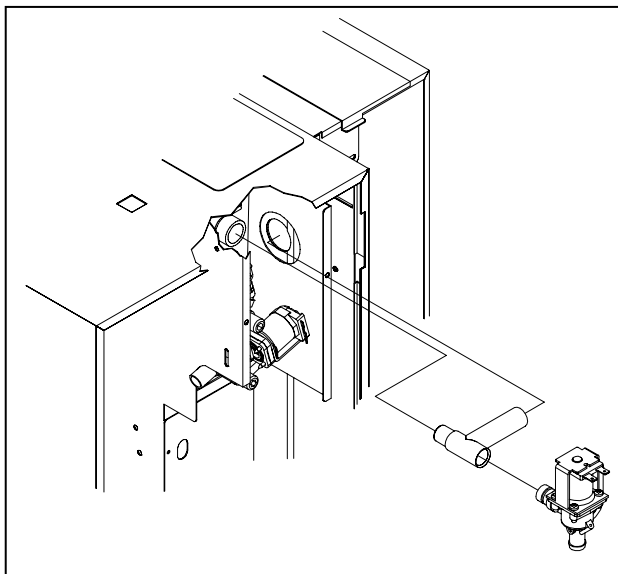


Figure 4 - Install the valve onto the new "T" inside the machine.

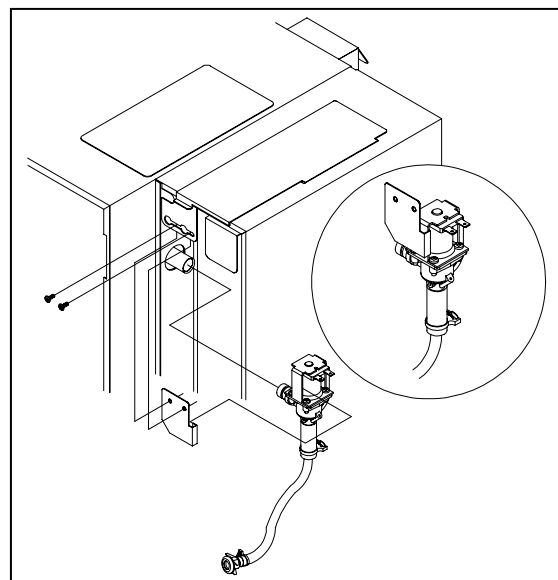


Figure 5 - Install the valve onto the "T" inside A.P.P.
Inset drawing shows valve plate already mounted.

INSTALLATION INSTRUCTIONS FOR THE AUXILIARY POWDER PRODUCT (A.P.P. / CAFÉ SIDECAR)

6. Remove the existing door tube assembly and replace it with the new one, including a new outlet spout weld assembly (figure 6 and 6a).
7. Connect the new powder product hoses to the whipper assembly inside the A.P.P. (figure 7).

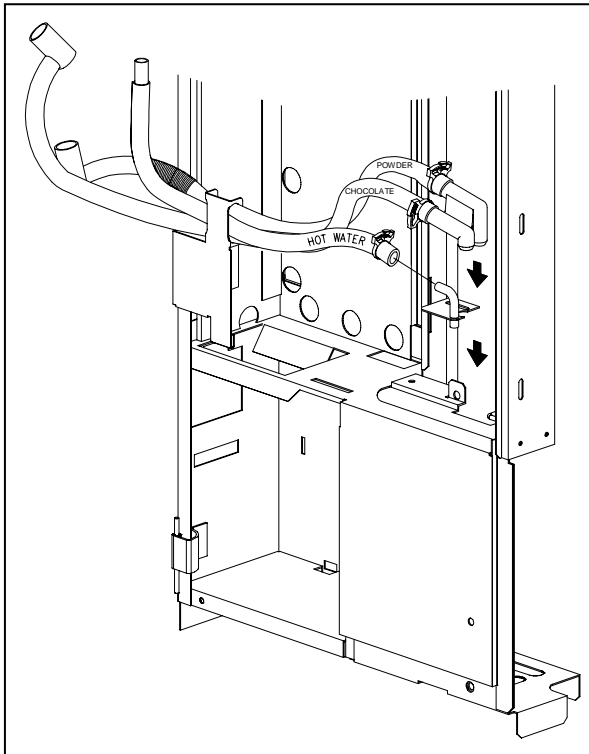


Figure 6 - Install the new door tubes assembly.

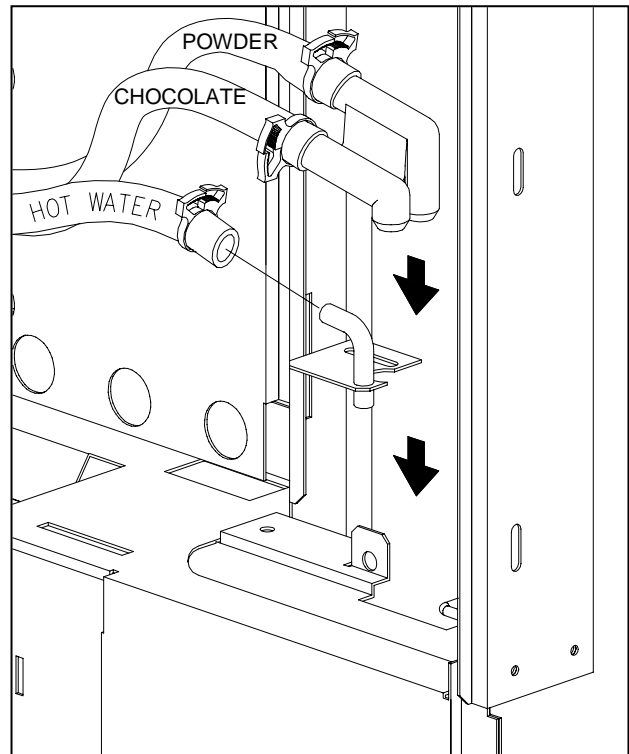


Figure 6a - Install the spouts as illustrated above.

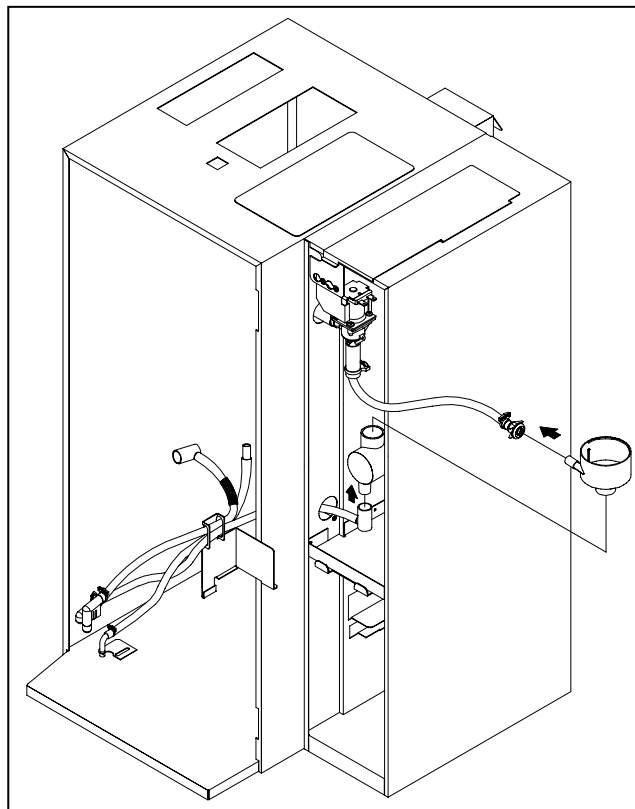


Figure 7 - Connect the hoses inside the A.P.P. (door has been removed from illustration to simplify identification of parts).

INSTALLATION INSTRUCTIONS FOR THE AUXILIARY POWDER PRODUCT (A.P.P. / CAFÉ SIDECAR)

SECTION IV - MAKE ALL THE NECESSARY ELECTRICAL CONNECTIONS

1. Pass the longer end of the wiring harness through the hole that was drilled at the back of the machine.
2. Using the following chart as a reference, make all the necessary wiring connections from the A.P.P. to the machine.

CONNECTIONS FOR MACHINE / A.P.P. HARNESS (Machine Side - Longer End) *	
Phone Type Cable	Connect to: Inline Adapter
Phone Type Cable	Connect to: Rear Board
Wire # APP 7 (green)	Connect to: Ground Stud , rear board cover (stud must be added)
Wire # APP 2 (white)	Connect to: Position #2 , general harness connector at rear board. <i>☞ Insert wire in open slot between wire #1 and wire #3.</i>
3 Pin Connector (black)	Connect to: 12 Volt Connector , rear board
Wire # APP 3-1 (blue)	Connect to: Wire # 11 of tank harness
Wire # APP 3-4 (blue)	Connect to: Wire # 3-2 of fuse box harness

* A drawing of the connections inside of the coffee machine has been provided on the next page. Please use the chart above, as well as the wiring drawing, as references.

NOTE: Moisture and condensation may enter the inline adapter and cause the contact pins inside to develop a non-conductive film. To protect against this, we recommend wrapping the adapter and (about 1" of the phone type cables before and after the adapter) with electrical tape. This will prevent moisture or condensation from entering the adapter.

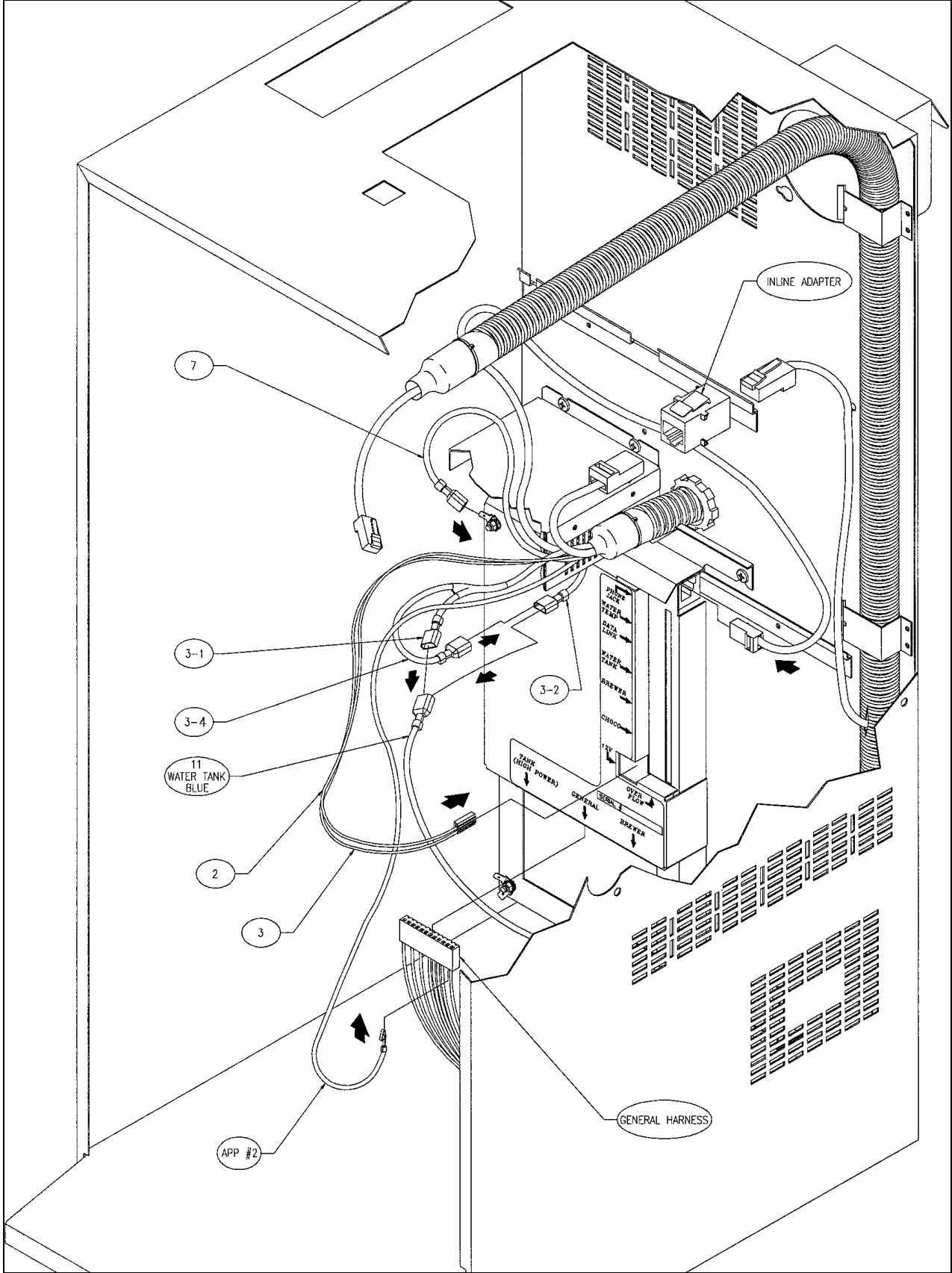
3. The following charts detail the wiring connections inside the A.P.P. system. Although this wiring is done at the factory, it is recommended that you keep these charts as a reference should you ever need to rewire the system.

CONNECTIONS FOR 9-PIN A.P.P. HARNESS (Harness Without Phone Type Cables)	
Wire # APP 1-2 (blue)	Connect to: Product Motor
Wire # APP 2 (white)	Connect to: Product Motor
Wire # APP 7-2 (white)	Connect to: Whipper Motor (from transformer)
Wire # APP 9-2 (blue)	Connect to: Whipper Motor (from transformer)
Wire # APP 1-3 (blue)	Connect to: Outlet Valve
Wire # APP 5 (white)	Connect to: Outlet Valve

CONNECTIONS FOR MACHINE / A.P.P. HARNESS (A.P.P. Side - Shorter End)	
Phone Type Cable	Connect to: A.P.P. Board
Phone Type Cable	Connect to: A.P.P. Board
Wire # APP 7 (green)	Connect to: Ground Stud , Left Wall of A.P.P.
3 Pin Connector (white)	Connect to: A.P.P. Board
Wire # APP 11-3 (white)	Connect to: Wire # A-4 on Small Auxiliary A.P.P. Harness
Wire # APP 3-2 (blue)	Connect to: Wire # A-1 on Small Auxiliary A.P.P. Harness
3 Pin Connector (black)	Connect to: A.P.P. Board

CONNECTIONS FOR SMALL AUXILIARY A.P.P. HARNESS (with 4 Pin Connector)	
4 Pin Connector (white)	Connect to: A.P.P. Board
Wire # A-1	Connect to: Wire # APP 3-2 (blue) on Machine / A.P.P. Harness on the A.P.P. Side (shorter end)
Wire # A-4	Connect to: Wire # APP 11-3 (white) on Machine / A.P.P. Harness on the A.P.P. Side (shorter end)

INSTALLATION INSTRUCTIONS FOR THE AUXILIARY POWDER PRODUCT (A.P.P. / CAFÉ SIDECAR)



Machine Wiring for the Auxiliary Powder Product System

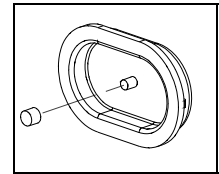
INSTALLATION INSTRUCTIONS FOR THE AUXILIARY POWDER PRODUCT (A.P.P. / CAFÉ SIDECAR)

SECTION V - ADD TWO SWITCH CAPS (BUTTONS) TO THE VISTA 3 FRONT BOARD

1. **Remove the front board assembly from the door of the machine.**
 - a) Open the inner door.
 - b) Remove the two screws at the top corners of the front board assembly.
 - c) Lift and pull off the front board assembly.

2. **Remove the electronic circuit board from the board cover.**
 - a) Remove the four small Phillips screws securing the LCD display to the front board cover.
 - b) Remove the six large Phillips screws securing the main circuit board to the front board cover.
 - c) Keep the assembly face down on the table and lift the board and LCD display assembly out of the cover. At this point, the display is secured onto the front board only with a board mounted connector. It is not necessary to separate the display from the front circuit board assembly.

3. **Add the two new switch caps to the front board.**
 - a) Add the small rubber standoff to the pins of both switches.
 - b) Install the switch caps onto the front board cover - one to the left side of the carafe button, and the other to the right.

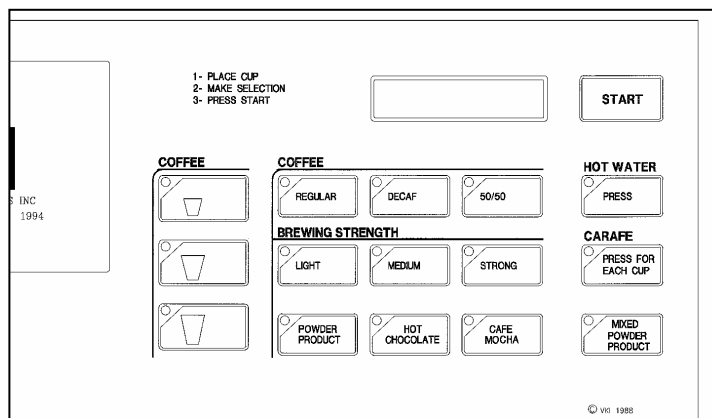
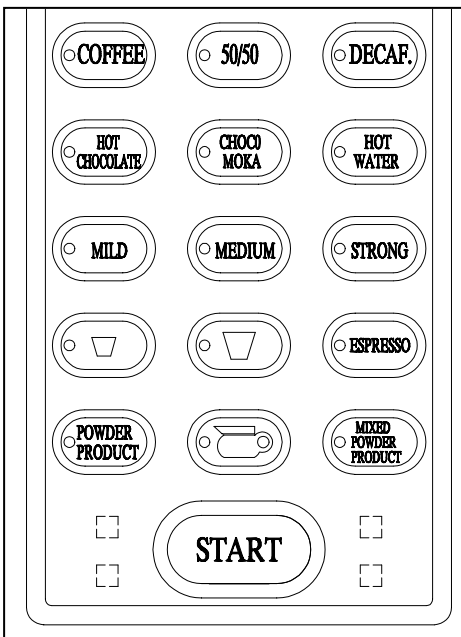


4. **Re-assemble the front board assembly.**
 - a) With the switch caps all in position, add and center the foam cushion onto the board cover.
 - b) Lay the front circuit board assembly (with the LCD display connected to it) flat onto the board cover assembly.
 - c) Secure the board in place with the six larger screws (*removed in step 2-b*).
 - d) Secure the LCD display in place using the four small screws (*removed in step 2-a*).

5. **Re-install the front board assembly onto the front door.**
 - a) Re-install the two screws that secure the board to the door (*removed in step 1-b*).

6. **Install the new fascia onto the front board.**

7. **Add the straight "POWDER PRODUCT" decal onto the switch cap to the left of the carafe button, and the "MIXED POWDER PRODUCT" decal onto the switch cap to the right of the carafe button.**



These two diagrams illustrate the proper positions of the "POWDER PRODUCT" and "MIXED POWDER PRODUCT" features on the front selection panels. Be certain that the overlays/decals are installed in the corresponding locations. The drawing to the left corresponds to the Vista 3, and the drawing above corresponds to the Vista 2-NT.

INSTALLATION INSTRUCTIONS FOR THE AUXILIARY POWDER PRODUCT (A.P.P. / CAFÉ SIDECAR)

SECTION VI - DOWNLOAD THE NEW SOFTWARE

1. Insert the new eprom (which contains the **special A.P.P. software**) into the socket on the Data Link downloader. Make certain that it is installed properly.
2. Switch the machine power “OFF”.
3. Connect the phone harness and download cable from the Data Link to the machine.
4. Press and hold down on the “CARAFE” button, then switch machine power “ON”. When the beeping stops, release the “CARAFE” button.
5. With the “**DOWNLOAD PROGRAM**” and “**DOWNLOAD FACTORY SETTINGS**” LED’s lit, press the “**START**” button on the Data Link.
6. Once the download is complete, switch the machine power “OFF” and disconnect Data Link harnesses from the machine.

NOTE: *More detailed downloading instructions can be found in the Vista 3 Programming Guide.*

SECTION VII - TESTING THE SYSTEM

Now that everything has been assembled and the new software has been downloaded, it is necessary to test the system to make certain that everything is working properly. For the moment, fill the hopper and test the system using the factory settings that were programmed when the new software was downloaded. The testing procedures are outlined below.

1. **Enter the “SET-UP” mode and enable the powder product features.**
 - a) Scroll to the “**ENABLE SWITCHES**” menu and switch these buttons **ON**.
 - b) Exit the “**SET-UP**” mode.
2. **Fill the A.P.P. hopper with the powder product of your choice.**
 - a) Insert the key into the A.P.P. lock and turn it open the front panel. This will unlock the product lid on the A.P.P.
 - b) Lift the lid up and to the right.
 - c) Pour powder product into the hopper.
 - d) Close the lid, put the front panel back in place and turn the key to lock it.
3. **Prime the powder product hopper.**
 - a) On the machine selection panel, select a large cup of the straight “**POWDER PRODUCT**” and press “**START**” to begin the cycle.
4. **Once primed, repeat the procedure and check the system for any restrictions and/or leaks (at the valves, hoses, and door tubes).**
5. **Repeat the procedure once more using the “**MIXED POWDER PRODUCT**” selection on the front panel.**
6. **Taste test both the “**POWDER PRODUCT**” and “**MIXED POWDER PRODUCT**” options.**

INSTALLATION INSTRUCTIONS FOR THE AUXILIARY POWDER PRODUCT (A.P.P. / CAFÉ SIDECAR)

7. Make any necessary changes to the settings for the “MIXED POWDER PRODUCT” feature.

- a) In “SET-UP”, scroll to the “SET POWDER MIX” menu.
- b) Press the “START” button to access this menu.
- c) At this point, the “ADJUST COFFEE RATIO” menu will be displayed. This setting allows you to program the **ratio percentage** of coffee to powder product. This setting increments in 10% intervals – from 10% to 100%.
- d) Scroll **UP** and the “PRODUCT TIMING” setting will appear on the display.
- e) Increase or decrease the product setting for each cup size. Press the “START “ button to test.
- f) Scroll **UP** again and the “WATER TIMING” setting will appear on the display.
- g) Increase or decrease the water setting for each cup size. Press the “START “ button to test
- h) Scroll **UP** once more to adjust the price for the “MIXED POWDER PRODUCT”. Please note that this price is based on the coffee price, plus the increase that is programmed in this setting. For example, if coffee price is \$0.50 and you would like to set the mixed powder product at \$0.60, then set the “ADD \$0.00 TO COFFEE PRICE” setting to \$0.10. This will now add \$0.10 to the coffee price (which is \$0.50 in this example). This setting can only be increased in \$0.05 intervals, and cannot be decreased below \$0.00.
- i) Increase the price setting for each cup size.
- j) Scroll “**UP**” again and the “ADD CHOCO PUMP” setting will appear on the display.
- k) This feature can be switched “**OFF**” or “**ON**”. If it is switched “**ON**”, then the chocolate pump will cycle once during the “**POWDER PRODUCT MIX**” cycle giving a mix of powder, chocolate and coffee. This cycle is fixed and cannot be programmed by the service person as it is calculated by the computer.

NOTE: The powder timing must never exceed the water timing to prevent powder from accumulating inside the whipper bowl. Some of the newer software versions will automatically prevent this from happening and will not allow the powder timing to exceed the water timing.

8. Make any necessary changes to the settings for the “POWDER PRODUCT” feature.

- a) In “SET-UP”, scroll to the “SET POWDER BEV.” menu.
- b) Press the “START” button to access this menu.
- c) At this point, the “WATER” setting will appear on the bottom row of the display.
- d) Increase or decrease the water setting for all three cup sizes. Press the “START” button to test.
- e) Scroll “**UP**” and the “POWDER” setting will appear on the bottom row of the display.
- f) Increase or decrease the powder product setting for all three cup sizes. Press the “START” button to test.
- g) Scroll “**UP**” once again and the “PRICE” setting will appear on the bottom row of the display.
- h) Increase or decrease the price setting for all three cup sizes.

Once the system has been tested and is functioning properly, install the new valve cover (supplied) onto the tank in the machine, and install any other panel or component that was removed during the installation process.

INSTALLATION INSTRUCTIONS FOR THE AUXILIARY POWDER PRODUCT (A.P.P. / CAFÉ SIDECAR)

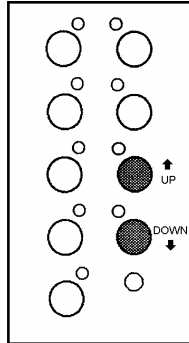
----- GENERAL INFORMATION -----

- You may want to order button overlay sheets with different product and option decals.

Vista 2 Overlays - M016045

Vista 3 Overlays - M016046

- If the A.P.P. system is installed in a V2-NT machine, the two lower right buttons (illustrated below) on the inside panel must be used to scroll up or down through the menus.



V2 Scroll Buttons

- Counters for the powder products can be found in the “COUNTERS” section of the “SET-UP” mode.
- The powder product mix will only function at the end of the coffee cycle. On earlier versions, you had the option of setting it at the beginning or the end of the cycle. Due to potential operating problems, this version does not offer this option.
- The “CAFÉ MOCHA” option functions with the powder product mix.
- When selecting the powder product mix option, you may notice small pauses towards the end of the brewer cycle. This was done to synchronize the coffee and powder so that both end at approximately the same time in the cycle.
- For the powder product cycle, the powder product valve may open and close several times throughout the cycle. This was done to prevent the whipper bowl from overflowing with liquid.
- If the “DOUBLE-CUP” option is used for a particular cup size, the powder product needs to be set manually (by doubling the water and product timing). All the other features will revert to double-cup automatically.
- For a 6-oz cup or smaller, the ratio percentage should **never be set below 50%**.
- The “POST-MIX” option will function with the powder product mix, however the extra water will be delivered by the brewer and not by the hot water valve. For a coffee cycle, the “POST-MIX” feature will continue to use the hot water valve.

In the “SET POWDER MIX” menu, if the “ADD CHOCO PUMP” option is switched “ON”,

- the “SET POWDER” menu and the “POWDER PRODUCT” counter can no longer be accessed.
- the chocolate pump is fixed to deliver only one cycle for all cup sizes. This cannot be programmed by the service person.
- once the powder mix and the coffee timings are set, no more settings are required. The computer will automatically re-calculate the timing for the powder/syrup/coffee mix.

If you have any questions, or if you require assistance with the installation of the Auxiliary Powder Product System, please do not hesitate to contact the VKI Customer Services Department. Our telephone number is **1-888-854-0207**. You can also reach us by fax at **1-(800)-567-7776**.

ASSEMBLY DRAWING AND PART NUMBERS

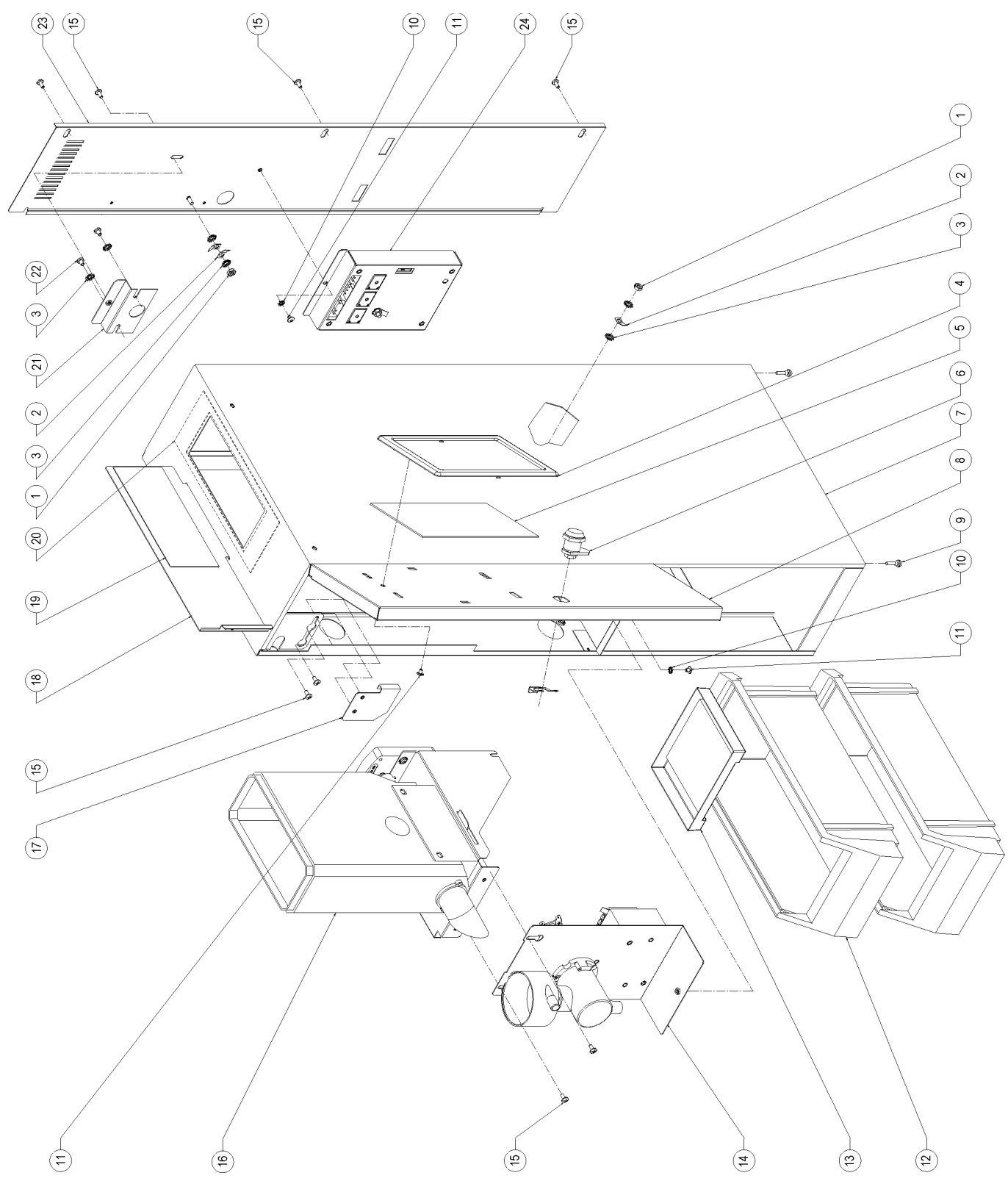


**INSTALLATION INSTRUCTIONS FOR THE AUXILIARY POWDER PRODUCT
(A.P.P. / CAFÉ SIDECAR)**

**APP SYSTEM
COMPLETE**

A510530

**SYSTÈME APP
COMPLÈT**



**INSTALLATION INSTRUCTIONS FOR THE AUXILIARY POWDER PRODUCT
(A.P.P. / CAFÉ SIDECAR)**

**APP SYSTEM
COMPLETE**

A510353

**SYSTÈME APP
COMPLÈT**

Item	DESCRIPTION	P/N	DESCRIPTION
1.	Hex Nut, 8-32, Regular	T008511	Écrou hexagonal ordinaire, 8-32
2.	.250 Tab, Stud Mountable	M019559	Cosse vissable, .250
3.	Lockwasher, #8, Ext. Tooth	T008421	Rondelle de blocage #8, ext. denté
4.	Ad Frame	M044061	Cadre, fenêtre
5.	Window, Clear Frame	M024140	Fenêtre acrylique, transparente
6.	Door Lock	M110020	Serrure, porte
7.	Assembly, Weld, A.P.P. Box	L511036C2	Boîtier soudé, APP
8.	Door Weld Assembly, Regular	L311001C2	Porte, soudée
	Door Weld Assembly, Convenience Store	L311004C2	Porte, soudée, publicitaire
9.	Bumper, Rubber	M014168	Butoir, caoutchouc
10.	Lockwasher, #6, Ext. Tooth	T006421	Rondelle de blocage #6, ext. denté
11.	Screw, 6-32 x 3/16, Truss	T620341	Vis, 6-32 x 3/16
12.	Condiment Bins, Black, 12/Box	M034122	Bac à condiments, noir
13.	Drip Tray	M024010	Cabarer d'égouttement
14.	Whipper Unit Assembly	E310275	Malaxeur, assemblage complet
15.	Screw, 6-32 x 5/16, Truss	T620541	Vis, 6-32 x 5/16
16.	Ingredient Dispenser Assembly	C410209	Distributeur à ingrédients
17.	Stopper, Valve	K021042C2	Butée, valve
18.	Lid	K021151C2	Couvercle, soudé
19.	Gasket, Lid, Cut	K210014	Joint d'étanchéité, couvercle, découpé
20.	Gasket (Scrap Piece)	---	Pièce de caoutchouc mousse, rebut
21.	Bracket, Shipping, Dispenser Motor	K021338C2	Support, expédition, moteur distributeur
22.	Screw, 8-32 x ¼, Pan	T820491	Vis, 8-32 x ¼
23.	Back Panel	L411008C2	Panneau arrière
24.	Assembly, Board and Cover, A.P.P.	G210015	Plaquette électronique et couvercle, APP
NOT SHOWN / NON ILLUSTRÉ			
	Artwork, Suprema	M036049	Graphique, Suprema
	Harness, 8-Pin	M029074	Harnais, 8 bornes
	Harness, Ground	G210111	Harnais, mise à terre
	Valve Cover Weld Assembly	L211168C2	Couvercle de valve
	Hose & Bracket Assembly	E210048	Assemblage support et tuyau
	Strain Relief	M019080	Relâcheur de tension
	Adapter, Valve, "T"	L111194	Adaptateur, valve, "T"
	Inline Adapter, Modular, Phone Cable	M019077	Adaptateur série, modulaire, câble téléphonique

Should you have to remove the A.P.P. from a unit, you can order black plastic snap plugs to block the holes that were punched. These plugs are listed below.

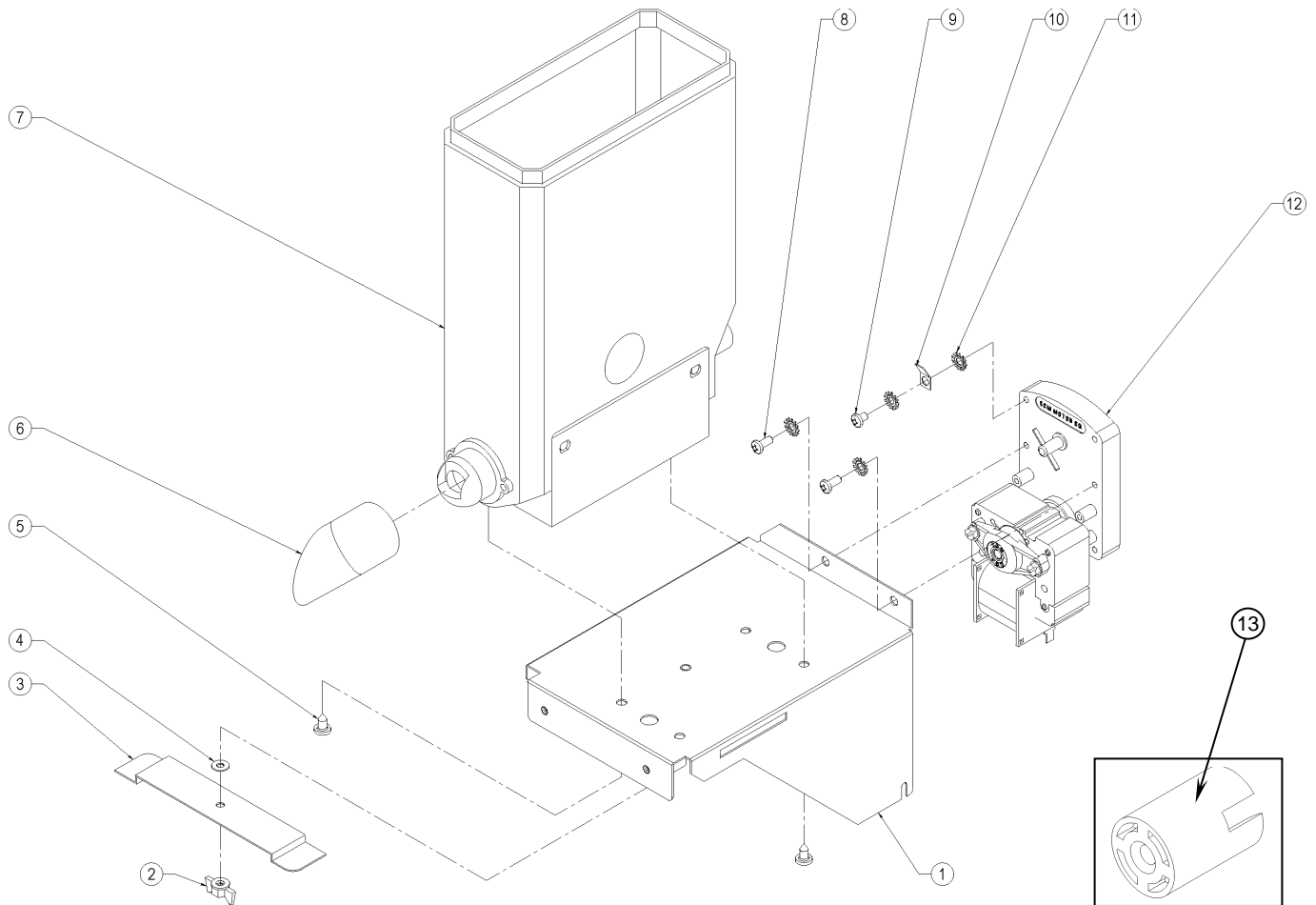
Large Plug	M019676	Bouchon, large
Small Plug	M019693	Bouchon, petit

Si vous avez besoin d'enlever le P.P.A. d'une machine, vous pouvez commander des bouchons noirs en plastique pour boucher les trous que nous avons percés. Les numéros des bouchons sont indiqués ci haut.

**INSTALLATION INSTRUCTIONS FOR THE AUXILIARY POWDER PRODUCT
(A.P.P. / CAFÉ SIDECAR)**

**APP INGREDIENT
DISPENSER ASSEMBLY**

**DISTRIBUTEUR
À INGRÉDIENTS APP**

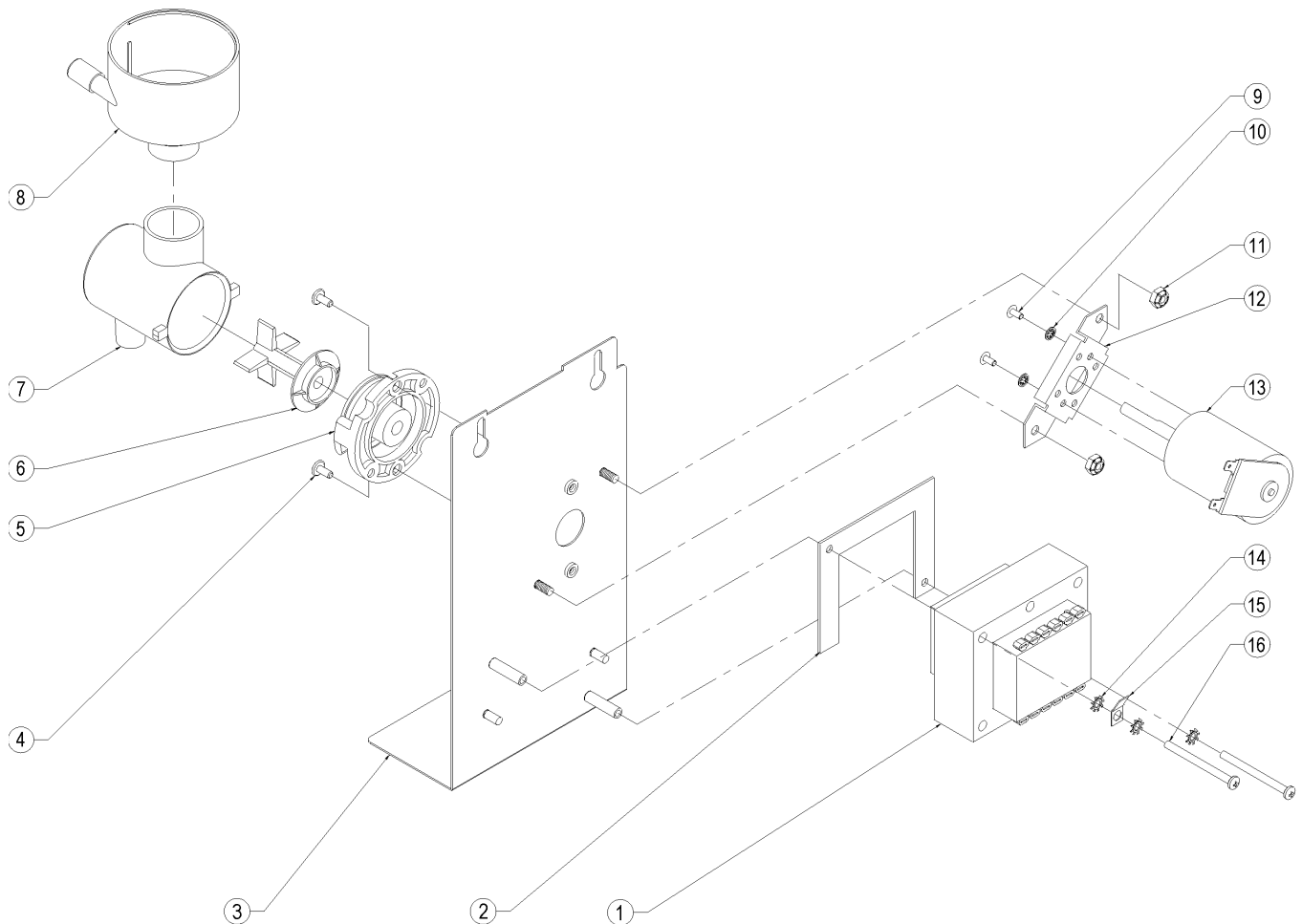


Item	DESCRIPTION	P/N	DESCRIPTION
1.	Support, Ingredient Motor & Dispenser	K031036C2	Support, distributeur à ingrédients
2.	Wing Nut, 8-32	M019670	Ecrou plastique
3.	Bar, Locking	K021036C2	Barre, verrouillage
4.	Washer, Plastic	K014039	Rondelle, plastique
5.	Screw, 10-3/8, AB, Tapping	T1AB069	Vis, 10-3/8, AB, auto-taraudeuse
6.	Chute, Product	K210016	Chute, produit en poudre
7.	Ingredient Dispenser	M039005	Distributeur à ingrédients
8.	Screw, 8-32 x 3/8, Rnd	T820611	Vis, 8-32 x 3/8, tête ronde
9.	Screw, 8-32 x 1/4, Pan	T820491	Vis, 8-32 x 1/4
10.	Terminal, .250, Stud Mount	M019559	Cosse vissable, .250
11.	Lock Washer, #8, Ext. Tooth	T008421	Rondelle de blocage #8, ext. denté
12.	Assembly, Ingredient Motor	C110043	Moteur, distributeur à ingrédients
13.	Dispenser Coupling	M014019	Couplage distributeur

INSTALLATION INSTRUCTIONS FOR THE AUXILIARY POWDER PRODUCT (A.P.P. / CAFÉ SIDECAR)

APP WHIPPER ASSEMBLY

ASSEMBLAGE DU FOUETTEUR - APP



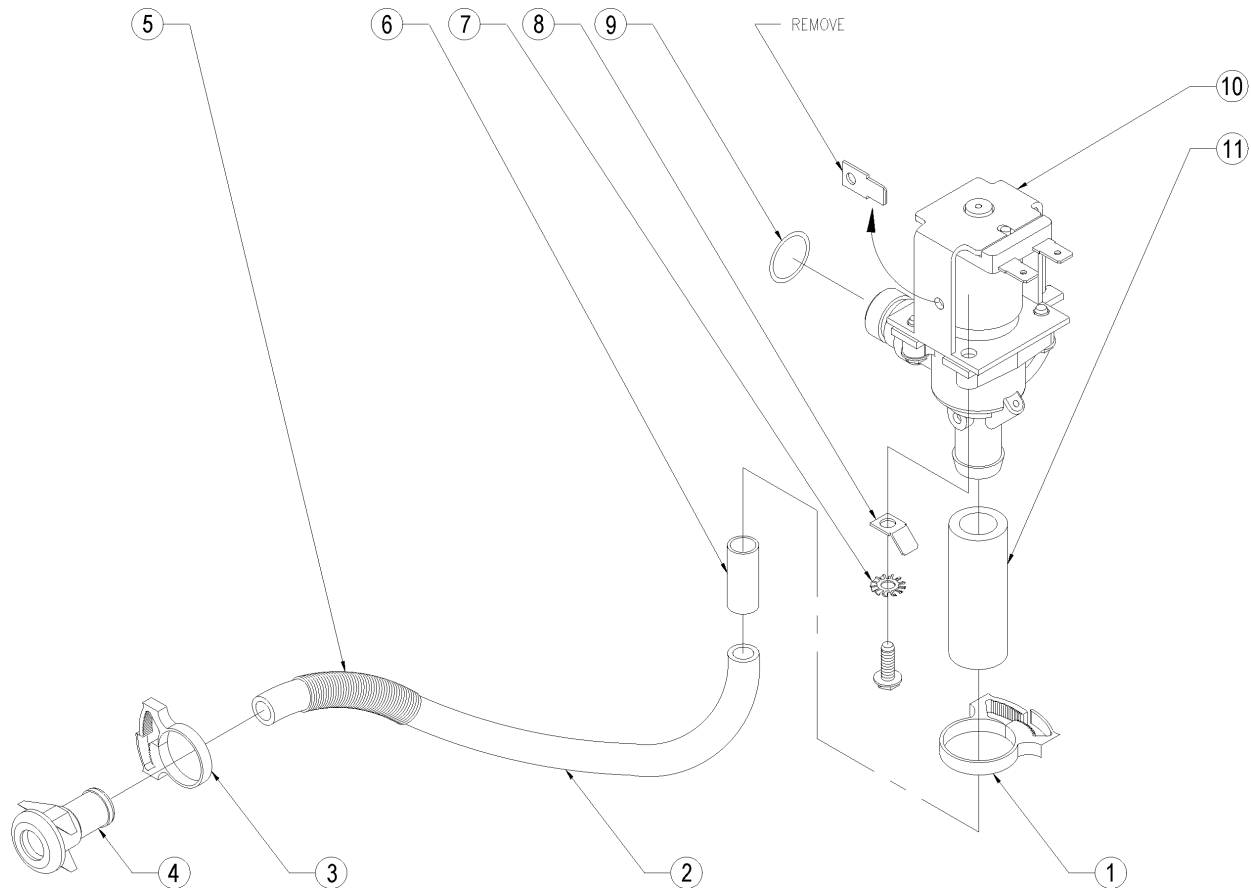
Item	DESCRIPTION	P/N	DESCRIPTION
1.	Transformer, Whipper	M018023	Transformateur, malaxeur
2.	Not Required	--	Non-requis
3.	Support, Whipper	K021148C2	Support, malaxeur
4.	Screw, 6-32 x 5/16, Truss	T620541	Vis, 6-32 x 5/16
5.	Base, Whipper	M029093	Base, chambre du malaxeur
6.	Propeller, Whipper	M019060	Lame, malaxeur
7.	Whipper Chamber	M029071	Chambre du malaxeur
8.	Funnel, Whipper	K110309	Entonnoir, malaxeur
9.	Screw, M3x8, Pan, Metric	T019722	Vis, 3 x 8, pan, PH, MT
10.	Lock Washer, #4, Ext. Tooth	T004321	Rondelle de blocage #4, ext. denté
11.	Lock Nut, 8-32	T019534	Écrou, hexagonal, 8-32
12.	Support, Whipper Motor	K021010C2	Support, moteur du malaxeur
13.	Assembly, Whipper Motor	M029066	Moteur, malaxeur, D.C.
14.	Lock Washer, #6, Ext. Tooth	T006421	Rondelle de blocage #6, ext. denté
15.	Terminal, .250, Stud Mount	M019559	Cosse vissable, .250
16.	Screw, 6-32 x 1.75, Pan	T019561	Vis, 6-32 x 1.75

**INSTALLATION INSTRUCTIONS FOR THE AUXILIARY POWDER PRODUCT
(A.P.P. / CAFÉ SIDECAR)**

**OUTLET VALVE AND
HOSE ASSEMBLY - APP**

E210049

**ASSEMBLAGE VALVE
DE SORTIE ET TUYAU**



Item	DESCRIPTION	P/N	DESCRIPTION
1.	Clamp, Plastic, #12	T014135	Pince, #12, plastique
2.	Hose, Powder	K015143	Boyaux, poudre
3.	Clamp, Plastic, #8	T014195	Pince, #8, plastique
4.	Coupling, Whipper Funnel	M019061	Raccord, entonnoir, malaxeur
5.	Spring Hose	M017089	Ressort, boyau
6.	Restrictor, Hose	K015014	Limiteur, boyau
7.	Lock Washer, #8, Ext. Tooth	T008421	Rondelle de blocage #8, ext. denté
8.	Terminal, .250, Stud Mount	M019559	Cosse vissable, .250
9.	O-Ring	M019052	Rondelle
10.	Valve, Deltrol	M029082	Valve, Deltrol
11.	Hose, Valve	K015122	Boyaux, valve

Vista 2NT et Vista 3 APP Factory settings
(software NT2 APP 5.1 F) or (software NT2 APP 5.1 E)

SELECTION		DEFAULT		
SET PRODUCT (COFFEE & DECAF)	SMALL-MILD	1.5 Sec.	6.2g	
	SMALL-MEDIUM	1.7 Sec.	7.0g	
	SMALL-STRONG	2.1 Sec.	8.5g	
	MEDIUM-MILD	1.7 Sec.	7.0g	
	MEDIUM-MEDIUM	2.2 Sec.	9.0g	
	MEDIUM-STRONG	2.4 Sec.	10.0g	
	LARGE-MILD	2.6 Sec.	11.0g	
	LARGE-MEDIUM	3.3 Sec.	14.0g	
	LARGE-STRONG	3.9 Sec.	16.0g	
SET WATER	SMALL COFFEE & DECAF	2.4 Sec.	145 ml	
	MEDIUM COFFEE & DECAF	3.0 Sec.	175 ml	
	LARGE COFFEE & DECAF	4.2 Sec.	275ml	
	SMALL HOT CHOCOLATE	2.2 Sec.	115 ml	
	MEDIUM HOT CHOCOLATE	2.6 Sec.	145 ml	
	LARGE HOT CHOCOLATE	2.6 Sec.	230 ml	
	SMALL CHOCO MOKA	1.6 Sec.	45 ml	
	MEDIUM CHOCO MOKA	1.9 Sec.	55 ml	
	LARGE CHOCO MOKA	1.5 Sec.	80 ml	
	SMALL HOT WATER	4.2 Sec.	150 ml	
	MEDIUM HOT WATER	5.3 Sec.	200 ml	
LARGE HOT WATER	7.1 Sec.	275 ml		
SET PRICE		(ALL \$0.25)		
ENABLE SWITCH		(ALL ACTIVATED, EXCEPT APP BUTTONS)		
SET DEFAULT		COFFEE, MEDIUM, SMALL CUP		
SET TOP PAUSE	SMALL CUP		5 Sec.	
	MEDIUM CUP		5 Sec.	
	LARGE CUP		7 Sec.	
SET BOTTOM PAUSE (COFFEE & DECAF)	SMALL CUP		3.0 Sec.	
	MEDIUM CUP		3.0 Sec.	
	LARGE CUP		7.0 Sec.	
MAX CUP/CARAFE		CARAFE 6 CUPS		
DELAY PAUSE		.0 Sec. (For ALL Brevier types)		
MESSAGE ON/OFF	REFILL LARGE		ON – PASSIVE	
	REFILL SMALL		ON – PASSIVE	
	REFILL CHOCOLATE		ON – PASSIVE	
	REMOVE SPENT		ON – PASSIVE	
	KEY OPERATOR		ON – PASSIVE	
	TEMP. IS TOO LOW		ON – PASSIVE	
FREE VEND KEY		MOMENTARY		
SET REWIND		MESSAGES: 150		
CHOCO PUMP	MOKA SMALL	1	15 ml	
	MOKA MEDIUM	1	15 ml	
	MOKA LARGE	2	30 ml	
	CHOCO SMALL	2	30 ml	
	CHOCO MEDIUM	2	30 ml	
	CHOCO LARGE	3	45 ml	
DOUBLE CUP		(NOT ACTIVATED)		
SET TEMPERATURE		93°C (199°F)		
PRESS-HOLD WATER		OFF		
SET WATER LEVEL		MECANIC SWITCH (CONSULT MANUAL)		
WATER MAX.BREWER		10.0 Sec.		
BREWER SELECTION		ZUMA		
SET POWDER MIX.	ADJUST COFFEE RATIO		60 %	
	SET POWDER MIX <i>small cup</i>	1.7 Sec.	10 g	
	SET POWDERMIX <i>medium cup</i>	1.9 Sec.	12 g	
	SET POWDER MIX <i>large cup</i>	3.3 Sec.	20 g	
	SET MIX WATER <i>small cup</i>	1.9 Sec.	50 ml	
	SET MIX WATER <i>medium cup</i>	2.1 Sec.	60 ml	
	SET MIX WATER <i>large cup</i>	4.0 Sec.	100 ml	
	ADD TO COFFEE PRICE (<i>small, medium, large cup</i>)		(ALL \$0.05)	
	ADD CHOCO PUMP		OFF	
SET POWDER BEV.	WATER <i>small cup</i>	4.8 Sec.	130 ml	
	WATER <i>medium cup</i>	6.0 Sec.	160 ml	
	WATER <i>large cup</i>	8.8 Sec.	230 ml	
	POWDER <i>smal cup</i>	3.1 Sec.	17 g	
	POWDER <i>medium cup</i>	3.5 Sec.	21 g	
	POWDER <i>large cup</i>	5.5 Sec.	30 g	
	PRICE (<i>small, medium, large cup</i>)		(ALL \$0.25)	
FORCED VEND		OFF		